

SATA30

User's Manual (DOS)

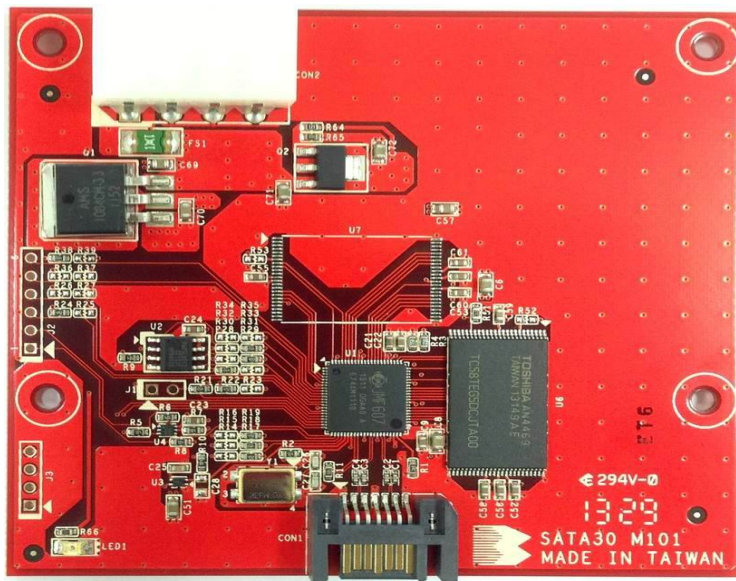
Bear Technologies
www.beartech.com.tw

Product Feature :

- SATA 3.0 Function Test

Product Content :

- SATA30 Test Card * 1



LED & CONNECTER :

- CON1 : SATA Connector
- LED1 : 5V Power LED (Red)
- CON2 : 5V Power Connector

1	5V
2	GND
3	X
4	X

Common Program Syntax :

- Filename : SATATST.COM

```

SATA-05 & SATA30  Test Ver 3.2  07/18/2013  Bear Technologies  Help: ?
Lap_Cnt: 0001  Loop_Cnt: 00000001  Start: 08/23/2013 15:00:40

DRV  Model Number          MIO_BASE  M SPD(E:R)  S_NO  Results
C:   WDC WD5000AAKX-001CA   F110      M Gen(?:?)  ??    Skip
D:   BearTech SATA30 M101  F110      S Gen(2:2)  FC    Gen_Spd Compare
E:   BearTech SATA30 M101  F0F0      M Gen(3:3)  FF    Gen_Spd Compare
F:   BearTech SATA30 M101  F0F0      S Gen(2:2)  02    Gen_Spd Compare
G:   BearTech SATA30 M101  F0B0      M Gen(2:2)  FC    Gen_Spd Compare
H:   BearTech SATA30 M101  F090      M Gen(2:2)  FB    Gen_Spd Compare
I:   ?????
J:   ?????
K:   ?????
L:   ?????
M:   ?????
N:   ?????
O:   ?????
P:   ?????
Q:   ?????
R:   ?????

101> SATA-?? Function (Expect/Pass) ( = 05/05) : Pass
Number of Fixed Disks: 06  "Q" : Quit  08/23/2013 15:00:40

```

- Syntax

```

SATA-05 & SATA30  Test Ver 3.2  07/18/2013  Bear Technologies  Help: ?

SATATST [T1..T16][G3:?????][G2:?????][\K][\IE]

\D  : Skip UltraDMA Write/Read Sectors (0C8h/0C9h/025h/035h)
\DM : Skip UltraDMA Write Sectors (0C9h/035h)
\P  : Skip PIO Mode Write/Read Sectors (020h/030h/0C4h/0C5h)
\PM : Skip PIO Mode Write (Multiple) Sectors (030h/0C5h)
\PM1 : Skip PIO Mode Write Sectors (030h)
\PM2 : Skip PIO Mode Write Multiple Sectors (0C5h)
\IE : Skip PIO Mode & 0ECh Command (Skip INT 13h Extension)
G3:DIJ : Expect D: I: J: Sata_Speed = Gen 3
G2:EFGH : Expect E: F: G: H: Sata_Speed = Gen 2
SATATST ; 1 SATA-?? & Lap_cnt = 1
SATATST T4 ; 4 SATA-?? & Lap_cnt = 1
SATATST T6 \P ; 6 SATA-?? & PIO Mode Skip
SATATST T8 \PM ; 8 SATA-?? & PIO Write Skip
SATATST T16 /0 ; 16 SATA-?? & Lap_cnt = loop
SATATST T4 *1*02*3*1C ; S_NO(01h/02h/03h/1Ch)&(SATA05.LOG)
SATATST T7 G3:DIJ ; 7 SATA-?? & (D:I:J: = Gen3)
SATATST T7 G2:EFGH ; 7 SATA-?? & (E:F:G:H: = Gen2)
SATATST T7 G3:DIJ G2:EFGH ; (D:I:J: = Gen3) (E:F:G:H: = Gen2)

```

Test Principle :

A. Product Feature:

- Ultra DMA Read/Write Test
- Gen3 Signaling Speed Test

B. Compatibility:

- MB , IPC , Server , Express Card

C. Testing Introduction:

- DOS Mode (SATATST.COM)可
- Only requires one program to conduct fully test SATA

D. Testing Procedure:

1. SATA30 Test Card Connect To SATA Port
2. Boot the screen to DOS platform
3. Excute **SATATST.COM**

Test Results :

A. The chips that have been tested :

INTEL: P65
P67
H77
Z77
QM77
H87
Z87
QM87

**Program updates and product related information
can be viewed and downloaded at :**

<http://www.beartech.com.tw>

Bear Technologies

TEL : (02)2649-9000